

# h i g h l i g h t s

Over 1200 learning hours.

Over 17,000 vocabulary words covered.

In line with the latest pedagogical approaches.

Support for different learning styles – Topic-based, Skill-based, Problem Solving.

Topic-based units for language learning in context.

Fully customized learning paths.

Sophisticated Intranet Teacher Management System.

Constantly updated Community website.

Captivating multimedia using the latest technologies including video and speech recognition.

All language skills covered – Reading, Listening, Writing, Speaking, and Grammar.

Native language support including a multilanguage dictionary with sound.

Familiarizes students with a range of cultures and raises their

intercultural awareness.

A range of printed supplementary materials with emphasis on high

interest realistic activities.

## Integrated English Learning the Smart Way!



Computers have been used for language teaching since the 1970s – even back then it was understood that computers could play a significant and useful role in helping students learn languages. With the introduction of English Discoveries in the early 1990s, Edusoft was the first company to enable rich and comprehensive multimedia programs to be integrated into classrooms around the world. With our extensive in-depth experience, we are aware more than ever of the key role of the teacher in making multimedia really work in the classroom. With this in mind, we created our new flagship product English Discoveries Expert!

Visit us on the web  
[www.edusoftlearning.com](http://www.edusoftlearning.com)



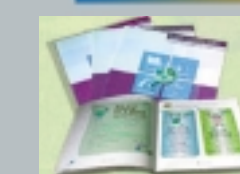
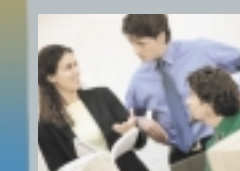
I n t e g r a t e d   p a c k a g e

D i s c o v e r   t h e   w o r l d   o f   E n g l i s h

Getting to Know You



Creating a Tailor-Made Solution



Implementing the Plan

Ongoing Customer Service

### English Discoveries Expert

# Discover the world of English!

The Next Step in the Evolution of How English Is Taught – English Discoveries Expert! English Discoveries Expert (EDE) is the most user-friendly and comprehensive computer-assisted English-language learning solution on the market today! With its unique modular design and incredible flexibility, EDE offers you a cost-effective and fully customizable program that maximizes your day-to-day English teaching experience, bringing the benefits of digital content into the classroom.

## Bringing Digital Content to Your Day-to-Day English Teaching Experience

EDE is not a standalone solution! Together with your institution's teachers, EDE provides your students with the tools they need to excel. With EDE in your classroom, you can take full advantage of its interactive multimedia environment, advanced pedagogical approaches and proven ability to teach English to all skill levels, from Beginner to Advanced.



The EDE package comes ready to install and use, and includes:

- Nine CD-based courses:
  - Three Basic level CDs
  - Three Intermediate level CDs
  - Three Advanced level CDs
- Supplementary Courses:
  - One Let's Start CD
  - One Executive CD

- A specially designed, powerful Teacher Management System (TMS) that provides complete control of the EDE solution, including registering teachers and students, designing individualized learning paths and courses, as well as creating detailed progress reports for both classes and groups of students.

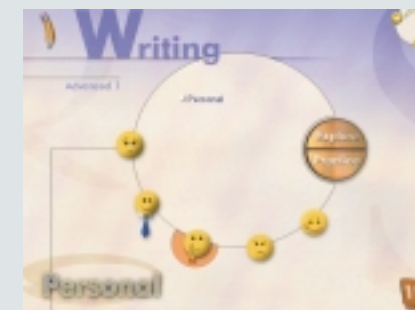
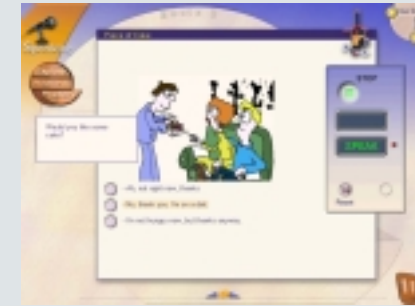
- Access to the exclusive and constantly updated English Discoveries Community Website, where students from all over the world meet and participate in a range of exciting community-building activities, with chats, forums and an instant-messaging system, as well as language-enrichment activities, such as an online magazine, idioms and word games.

- A comprehensive set of manuals and documentation including User Manual, Installation Guide, Implementation Guide, Pedagogical Guide and Teacher Management System Manual containing a wealth of information to help you better integrate EDE into your everyday teaching.



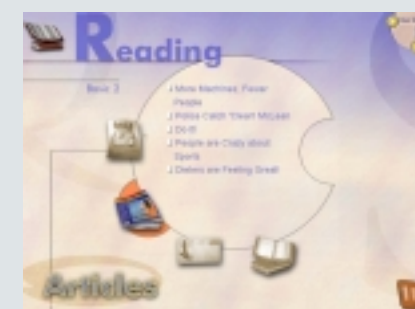
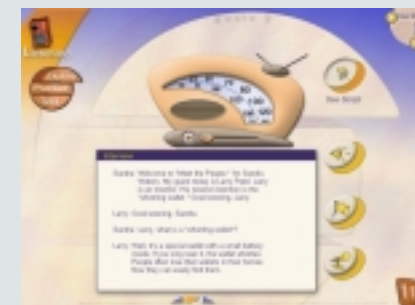
The courses support a variety of pedagogical approaches and learning styles, both topic-based and skill-based, including a wide range of exercises in:

**Speaking**, with real-life dialogues from everyday situations to emphasize the functional, day-to-day use of English.



**Writing**, with a simplified word processor for writing letters, forms and reports to teach your students the skills they need.

**Listening**, designed to enhance your students' ability to comprehend spoken English through a variety of video and audio clips, such as radio programs, TV shows and more.



**Reading**, exposing your students to various types of texts, such as stories and letters, to teach them the most effective reading strategies.

**Grammar**, introducing grammatical structures in context through animated, humorous examples that make learning fun.



# Unlock English Discoveries Expert's Full Potential With Our Unique Integration Concept

Using our vast experience in integrating Computer Assisted Language Learning (CALL) Programs into classrooms around the world, we have built a proven, structured four-step integration and implementation process that focuses on the teacher's role in the integration and learning process. This systematic process enables us to create fully customized and personalized teaching solutions appropriate for your school's needs and budget, that can be completely integrated into your everyday teaching routine.

## Step 1: Getting to Know You



The first step in our integration process helps us determine what your school's needs and characteristics are - the level of your students' English and Web literacy, the sort of textbooks and lessons you use, as well as your school's technological infrastructure and budget.

## Step 2: Creating a Tailor-Made Solution



The next step consists of planning and assembling an EDE structure that is customized and best suited to your particular requirements and budget. In addition to the basic EDE package, we also offer an extended package of supplementary resources, including additional workbooks, implementation guides and models, integration and correlation tables, and an in-depth teacher-training program. EDE's modularity enables you to choose only the modules and resources you need for building a tailor-made English teaching program.

## Step 3: Implementing the Plan



Once your tailor-made EDE solution is built, together we put it into action. This joint project includes software installation, initial teacher training, and integration into your day-to-day English teaching routine. When this step is completed, you will have a complete, personalized, ready-to-use CALL solution.

## Step 4: Ongoing Customer Service



The process doesn't stop after everything is integrated and implemented. Ongoing friendly and helpful technical support, updates and upgrades, follow-up training courses and pedagogical support, all ensure that you have everything you need to keep EDE running smoothly for the long term.